



ZEPHAIR

Gentle Critical Care



Forté Zephyr ZA1000 - Foam Specifications

Gentle Critical Care Air Mattress System

Pain Management, High Level Palliative Care Mattress

The Forté Zephyr Gentle Critical Care Air mattress system provides true leadership when patient care demands an all-encompassing support surface. Tried and trusted for Palliative Care, Pain Management, Spinal Cord Injury and many other high-risk applications, the Zephyr combines unprecedented comfort with outstanding care. The Zephyr incorporates unique features that optimise patient mobility and function, helping patients requiring high levels of pressure care to live their best life.



PATIENT INTERFACE - UPPER LAYER

- ✓ Airoform Response Immersion Interface
- ✓ High cell elasticity for patient immersion
- ✓ Anti-microbial treatment applied to foam maximises longevity and core micro-climate
- ✓ Conforms to EPUAP, NPUAP & PPIA Guidelines for quality and comfort



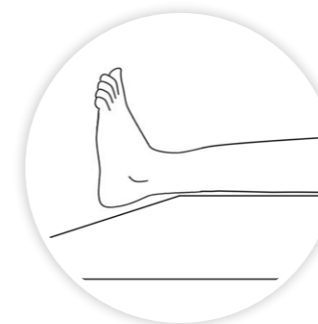
PATIENT INTERFACE - LOWER LAYER

- ✓ Airoform Memory Breathe Secondary Immersion Layer
- ✓ Alleviates localised pressure points
- ✓ Provides maximum contact with patient for distribution of interface pressure
- ✓ High temperature stability to deliver consistent immersion, performance and comfort
- ✓ Unique Airoform Memory Breathe ventilation system minimises heat entrapment and enhances core circulation providing a cooler sleep surface
- ✓ Visco-elastic cell structure provides low-shear surface



FIRM FOUNDATION

- ✓ Provides protection to air system from bed base
- ✓ Provides patient protection should a prolonged power outage occur



SLOPED HEEL REGION

- ✓ Enhances pressure relief & protection for critical at-risk heel region
- ✓ Offloads pressure from the patients heels and transfers it to calf area
- ✓ Unobtrusive, does not require any adjustment



PROFILE STABILISING SIDES

- ✓ Enables ease of primary patient care
- ✓ Facilitates patient transfers
- ✓ Unique hinge points allow mattress to easily conform to varied bed positions
- ✓ Encourages central patient positioning



ANTI-SHEAR INNER COVER

- ✓ Dramatically reduces shearing forces at the patient interface
- ✓ Low friction inner cover compartmentalised to segregate the modular regions of the Zephyr in turn delivering a series of shear reduction levels
- ✓ Fine stretch Lycra based material is wrinkle free and conforming to varied bed positions
- ✓ Provides additional protection to the foam core



APPLICATIONS

- ✓ Hospital Ward Usage
- ✓ Aged Care
- ✓ Palliative Care
- ✓ Home Care

Zephair ZA1000

CODE	SIZE (MM)	
ZAS1000	1980x880x215	Single
ZAKS1000	1980x1050x215	King Single
EFFECTIVE WEIGHT CAPACITY*	180KG	
WARRANTY**	5-YEAR FOAM CORE WARRANTY	
	1 YEAR PUMP & CELL WARRANTY	



22 CELL, ALTERNATING AIR SYSTEM

- ✓ 125mm depth facilitates immersion
- ✓ Ultra-flexible, soft-touch material
- ✓ 22 Cell System minimises patient disturbance
- ✓ Static head support region



EASY TO ACCESS CPR

- ✓ Positioned on air supply tubes
- ✓ Access is not impeded by bed linen or side rails



MODULAR DESIGN

- ✓ Every component is modular and replaceable for low ongoing operational costs
- ✓ 360° access zipper for ease of maintenance



SILENT, ERGONOMIC PUMP

- ✓ Silent operation minimising patient disturbance
- ✓ Intuitive, simple operation
- ✓ One-touch quick-change air filter for ease of maintenance
- ✓ Mounts to wide variety of beds
- ✓ Quality componentry
- ✓ Full after-sales backup and support
- ✓ Low pressure indication & power failure alert

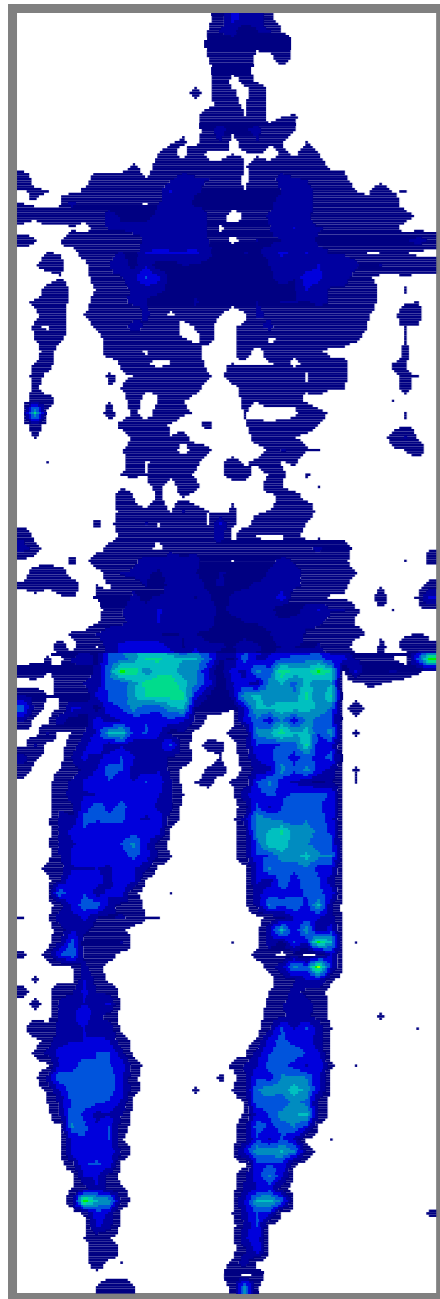


POWER CORD SAFETY RETENTION SYSTEM

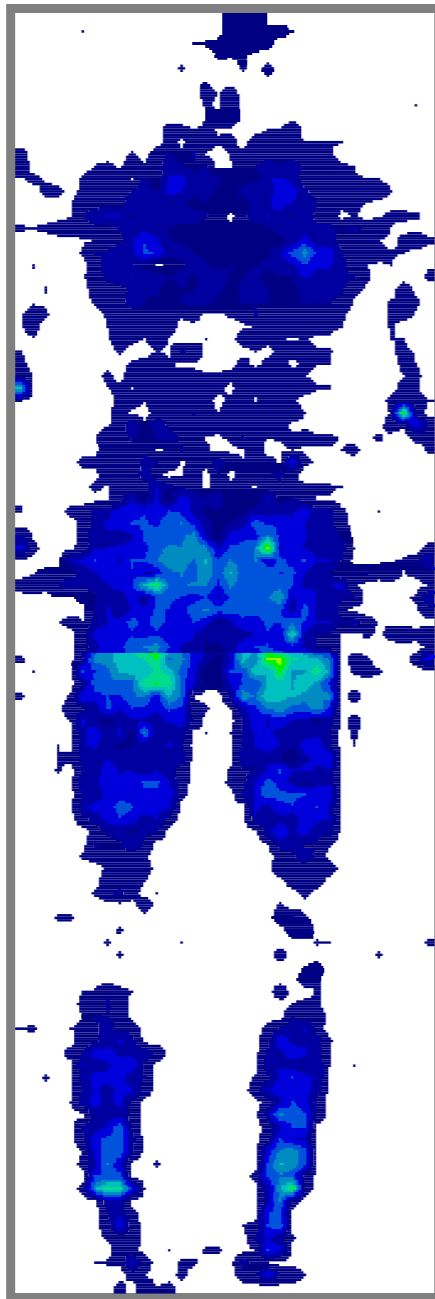
- ✓ Integrated loops enable the power cord to be fastened to the side of the mattress
- ✓ Prevents trip hazards and power cord entrapment by adjustable bed surface
- ✓ Press-stud closure allows easy fitment

CLINICAL PRESSURE ANALYSIS

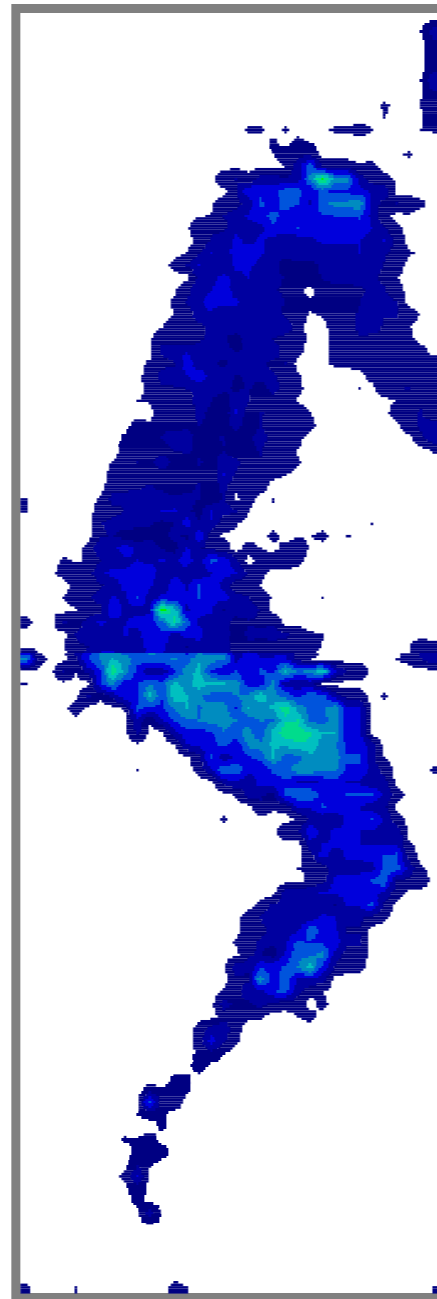
FOWLER - ELEVATED LEGS



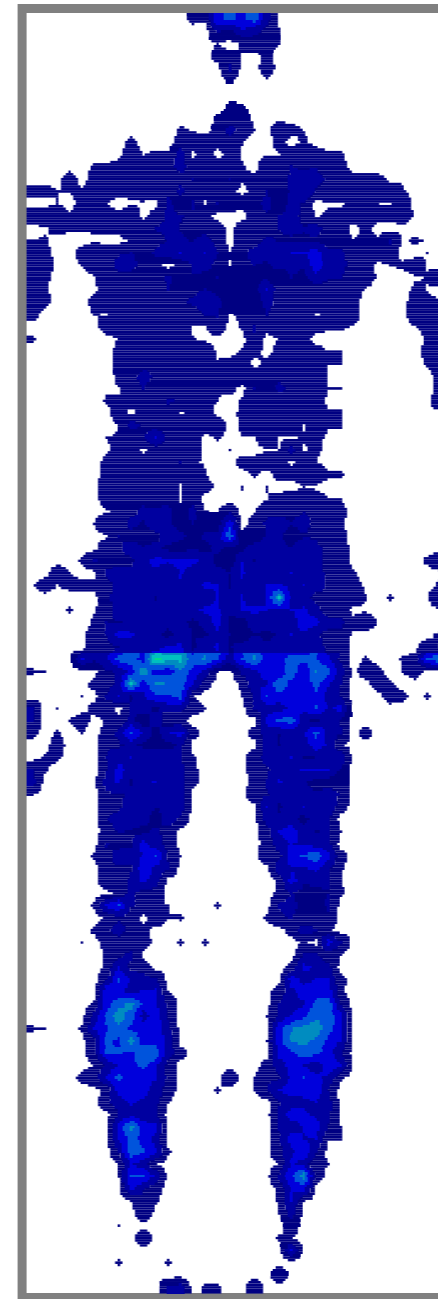
FOWLER



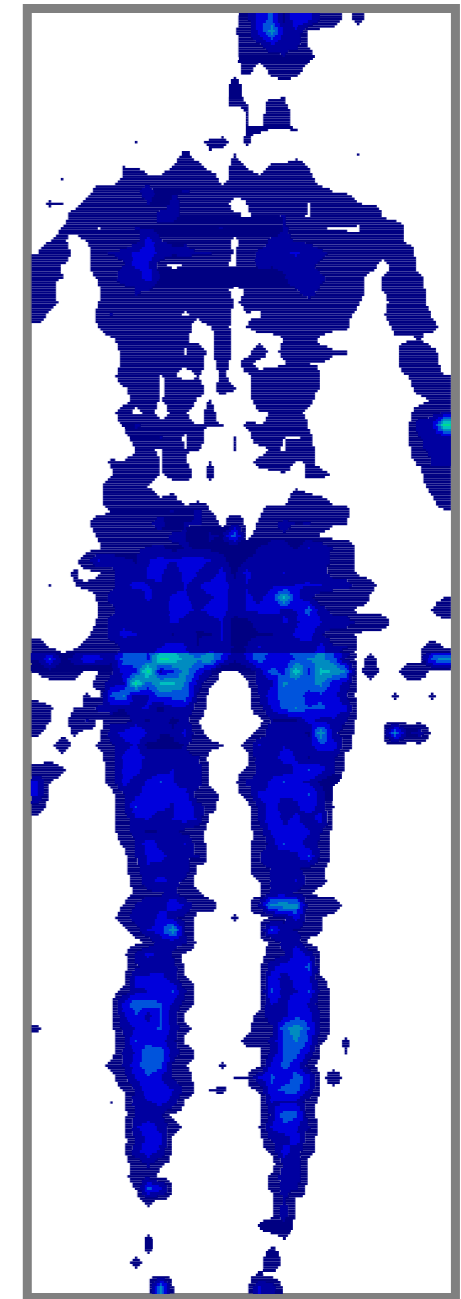
LATERAL RECUMBANT



SUPINE - ELEVATED LEGS



SUPINE



Tekscan Pressure Measurement System 7.20C
 SENSOR_TYPE 5400D
 ROWS 104
 COLS 34
 SENSEL_AREA 2.89008 cm2
 SECONDS_PER_FRAME 0.010319
 MICRO_SECOND 0
 UNITS mmHg

NOTES

Pressure Mapping Parameters

Bed Surface: Icare Medical King Single

Ambient Temperature: 21°C

Duration: Pressure Mapping was captured after 6 hours of Subject Laying Upon Support Surface

Subject: 98kg, Male, Height: 188cm

Premiflex Ultra Pressure Care Covers

Superior Quality, High Performance Medical Grade Pressure Relieving Covers

Forté Premiflex Covers are a superior choice for pressure relief and patient care. Premiflex covers use a selected range of proven pressure relief fabrics based upon their performance, care and longevity in the acute and long-term care setting. Premiflex grade covers are differentiated by their superior performance materials, heavier weight fabrics, increased shear protection, greater resistance to cleaning agents and superior durability within the acute care setting.



FULL VAPOUR PERMEABILITY

- ✓ Allows vapour to travel right through the cover at a controlled rate
- ✓ Reduces risk of internal infection entrapment and optimises core micro-climate

CLEANING AND CARE

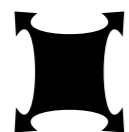
- ✓ 10,000ppm disinfection chemical suitability
- ✓ Wipe clean

WATERFALL ZIPPER PROTECTION FLAP

- ✓ Protects additional protection against fluid ingress through zipper
- ✓ Meets infection control guidelines



High durability



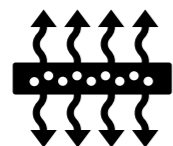
Excellent stretch



Fire retardant



Barrier Fabric



Breathable/
vapour permeable



95° High Wash
Temperature



Resistance to
cleaning agents



Anti-Microbial
protection

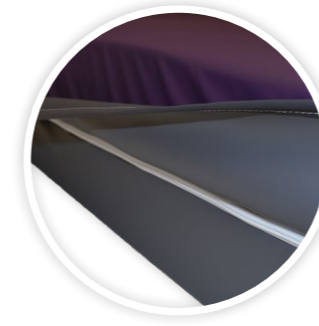
PREMIUM POLYURETHANE COATED PRESSURE CARE UPPER

- ✓ Superior 4-way stretch for shear protection
- ✓ Vapour permeable and breathable
- ✓ Flexible and gentle to the skin
- ✓ 10,000ppm cleaning agent concentration suitability
- ✓ Fire retardant, meets BS 6807 ignition source 5 and BS 7175 ignition source 5 standards
- ✓ Anti-microbial protection, resistant to patient body fluids



HEAVY DOUBLE COATED POLYURETHANE BASE

- ✓ Durable
- ✓ Protects foam core against the bed base
- ✓ Provides exceptional conformity and profiling to medical bed surfaces
- ✓ Meets fire retardant specifications: BS EN 597-1: 1995, BS EN 597-2: 1995, BS 7175: 1989 ignition source 0,1,5



INTEGRATED 360° ZIPPER

- ✓ Allows easy cover removal
- ✓ Robust and durable
- ✓ High frequency welded attachment for optimal protection against fluid ingress



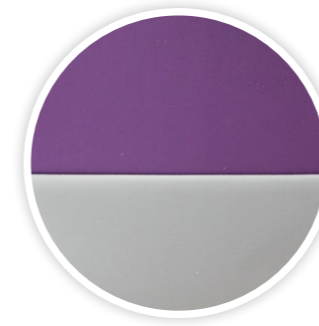
CARRY HANDLES

- ✓ Fits to side of Mattress Cover for easy access whilst Mattress is on the bed
- ✓ Internal Reinforcement for Longevity
- ✓ Close Mount Design Significantly Reduces Risk of Getting Caught on Other Patient Care Equipment
- ✓ Fully Sealed Non-Absorbent and Wipe-Clean for Infection Control
- ✓ Very Strong and Flexible for Performance and Durability



HIGH FREQUENCY SEALED AND WELDED SEAMS

- ✓ Electromagnetically fused seams protecting against risk of penetration of fluid
- ✓ Meets and exceeds infection control requirements
- ✓ Reinforced with additional heavy duty stitching at stress points
- ✓ 100% Sealed to prevent ingress of fluid or infection



Forté Healthcare are Australian manufacturers of high performance medical mattresses that are clinically effective and comfortable.

We utilise market-leading technology, innovation and clinical research to improve patient outcomes and makes nursing easier.

From our unique manufacturing facility in Armidale NSW, every mattress is custom-made specifically to suit the needs of our clients.

The Forté team has extensive technical experience and resource to ensure we provide market leading product advice. Our record of longstanding client relationships is testament to our commitment to customer care.

Day and night Forté products protect and enhance the well-being and comfort of patients and caregivers in Acute Care Hospitals, Aged Care Facilities and Medical Home Care.

We welcome the opportunity to serve you and provide you the advantage of working with a team that care enough to offer solutions tailor made to your unique requirements, however large or small.



DISCLAIMERS

- * Optimal patient weight range for pressure care and comfort. Minimum weight capacities are to be used as a guide only, it may be the situation that patients with a lower weight than the minimum weight threshold will be suited to a surface with a greater minimum weight threshold than that of their own weight for functional and/or individual comfort purposes.
- ** Warranty refers to any manufacturing or product defects. Due to its nature, foam will soften and its resilience will decrease with usage and age. Contact Forté Healthcare Solutions for further specific information.



A close-up photograph of several white flowers, possibly lilies or tulips, with soft, layered petals. The flowers are the central focus, filling most of the frame. The lighting is bright and even, highlighting the texture of the petals. The background is a plain, light color, making the white flowers stand out.

MEDICAL MATTRESS EXPERTS



P. 1300 73 11 63

W. fortehealthcare.com.au

E. sales@fortehealthcare.com.au